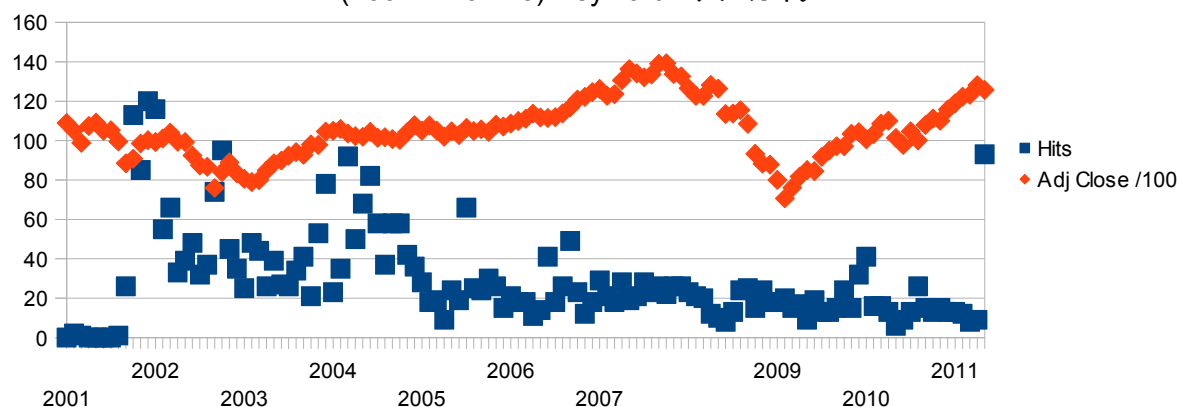


The Table for "Graph 4: DJI with Monthly hits count in 聞蔵 II"

Graph 4: DJI with Monthly hits count in 聞蔵 II

(2001/1-2011/5) Keyword:" アルカイダ "



Year	Month	Year	Hits	Adj Close /100	Adj Close	Month	Year
2001	1	2001	0	108.87	10887.36	Jan	2001
	2		2	104.95	10495.28	Feb	
	3		1	98.79	9878.78	Mar	
	4		0	107.35	10734.97	Apr	
	5		0	109.12	10911.94	May	
	6		0	105.02	10502.4	Jun	
	7		0	105.23	10522.81	Jul	
	8		1	99.5	9949.75	Aug	
	9		26	88.48	8847.56	Sep	
	10		113	90.75	9075.14	Oct	
	11		85	98.52	9851.56	Nov	
	12		120	100.22	10021.57	Dec	
2002	1	2002	116	99.2	9920	Jan	2002
	2		55	101.06	10106.13	Feb	
	3		66	104.04	10403.94	Mar	
	4		33	99.46	9946.22	Apr	
	5		39	99.25	9925.25	May	
	6		48	92.43	9243.26	Jun	

	7		32	87.37	8736.59	Jul	
	8		37	86.64	8663.5	Aug	
	9		74	75.92	7591.93	Sep	
	10		95	83.97	8397.03	Oct	
	11		45	88.96	8896.09	Nov	
	12		35	83.42	8341.63	Dec	
2003	1	2003	25	80.54	8053.81	Jan	2003
	2		48	78.91	7891.08	Feb	
	3		44	79.92	7992.13	Mar	
	4		26	84.8	8480.09	Apr	
	5		39	88.5	8850.26	May	
	6		27	89.85	8985.44	Jun	
	7		26	92.34	9233.8	Jul	
	8		34	94.16	9415.82	Aug	
	9		41	92.75	9275.06	Sep	
	10		21	98.01	9801.12	Oct	
	11		53	97.82	9782.46	Nov	
	12		78	104.54	10453.92	Dec	
2004	1	2004	23	104.88	10488.07	Jan	2004
	2		35	105.84	10583.92	Feb	
	3		92	103.58	10357.7	Mar	
	4		50	102.26	10225.57	Apr	
	5		68	101.88	10188.45	May	
	6		82	104.35	10435.48	Jun	
	7		58	101.4	10139.71	Jul	
	8		37	101.74	10173.92	Aug	
	9		58	100.8	10080.27	Sep	
	10		58	100.27	10027.47	Oct	

	11		42	104.28	10428.02	Nov	
	12		36	107.83	10783.01	Dec	
2005	1	2005	28	104.9	10489.94	Jan	2005
	2		18	107.66	10766.23	Feb	
	3		19	105.04	10503.76	Mar	
	4		9	101.93	10192.51	Apr	
	5		24	104.67	10467.48	May	
	6		19	102.75	10274.97	Jun	
	7		66	106.41	10640.91	Jul	
	8		25	104.82	10481.6	Aug	
	9		24	105.69	10568.7	Sep	
	10		30	104.4	10440.07	Oct	
	11		26	108.06	10805.87	Nov	
	12		15	107.18	10717.5	Dec	
2006	1	2006	21	108.65	10864.86	Jan	2006
	2		18	109.93	10993.41	Feb	
	3		18	111.09	11109.32	Mar	
	4		11	113.67	11367.14	Apr	
	5		14	111.68	11168.31	May	
	6		41	111.5	11150.22	Jun	
	7		18	111.86	11185.68	Jul	
	8		26	113.81	11381.15	Aug	
	9		49	116.79	11679.07	Sep	
	10		23	120.81	12080.73	Oct	
	11		12	122.22	12221.93	Nov	
	12		18	124.63	12463.15	Dec	
2007	1	2007	29	126.22	12621.69	Jan	2007
	2		21	122.69	12268.63	Feb	

	3		18	123.54	12354.35	Mar	
	4		28	130.63	13062.91	Apr	
	5		19	136.28	13627.64	May	
	6		21	134.09	13408.62	Jun	
	7		28	132.12	13211.99	Jul	
	8		23	133.58	13357.74	Aug	
	9		26	138.96	13895.63	Sep	
	10		22	139.3	13930.01	Oct	
	11		26	133.72	13371.72	Nov	
	12		26	132.65	13264.82	Dec	
2008	1		23	126.5	12650.36	Jan	2008
	2		21	122.66	12266.39	Feb	
	3		20	122.63	12262.89	Mar	
	4		12	128.2	12820.13	Apr	
	5		10	126.38	12638.32	May	
	6		8	113.5	11350.01	Jun	
	7		13	113.78	11378.02	Jul	
	8		24	115.44	11543.55	Aug	
	9		25	108.51	10850.66	Sep	
	10		15	93.25	9325.01	Oct	
	11		24	88.29	8829.04	Nov	
	12		18	87.76	8776.39	Dec	
2009	1	2009	18	80.01	8000.86	Jan	2009
	2		20	70.63	7062.93	Feb	
	3		15	76.09	7608.92	Mar	
	4		17	81.68	8168.12	Apr	
	5		9	85	8500.33	May	
	6		19	84.47	8447	Jun	

	7		13	91.72	9171.61	Jul	
	8		13	94.96	9496.28	Aug	
	9		15	97.12	9712.28	Sep	
	10		24	97.13	9712.73	Oct	
	11		15	103.45	10344.84	Nov	
	12		32	104.28	10428.05	Dec	
2010	1	2010	41	100.67	10067.33	Jan	2010
	2		16	103.25	10325.26	Feb	
	3		16	108.57	10856.63	Mar	
	4		13	110.09	11008.61	Apr	
	5		6	101.37	10136.63	May	
	6		9	97.74	9774.02	Jun	
	7		13	104.66	10465.94	Jul	
	8		26	100.15	10014.72	Aug	
	9		15	107.88	10788.05	Sep	
	10		13	111.18	11118.4	Oct	
	11		15	110.06	11006.02	Nov	
	12		13	115.78	11577.51	Dec	
2011	1	2011	13	118.92	11891.93	Jan	2011
	2		12	122.26	12226.34	Feb	
	3		8	123.2	12319.73	Mar	
	4		9	128.11	12810.54	Apr	
	5		93	125.7	12569.79	May	